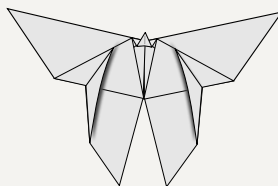


PollenAct

LIVING LANDSCAPES: BIOMIMICRY, HABITAT CONNECTIVITY AND POLLINATOR CONSERVATION

Murska Sobota Castle, Slovenia | 11 June 2026

Register by June 8, 2026



[Register here](#)

09:00

INTRODUCTION AND BRIEF PRESENTATION OF BIOMIMICRY PROJECT

Tadej Pirc, Development Centre Murska Sobota, Slovenia

09:10

CURRENT SPATIAL TRENDS IN POMURJE REGION AND THEIR IMPACT ON LOCAL BIODIVERSITY

Tomaž Koltai, Development Centre Murska Sobota, Slovenia

09:40

NO PLACE LIKE HOME? FACILITATED RAPID NEST SWITCHING OF THE BARN OWL IN A FRAGMENTED LANDSCAPE

Ákos Klein, Barn Owl Foundation, Hungary

10:10

FROM ECOSYSTEM INTELLIGENCE TO DESIGN PRACTICE: BIOMIMICRY BEYOND INSPIRATION

Franciska Erdelj, Croatian Green Building Council, Croatia

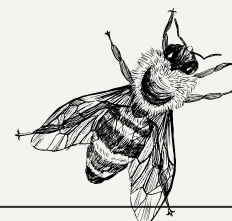
10:40

ROUND TABLE CONVERSATION

PollenAct



[Register here](#)



11:00	Coffee Break
11:30	BRIEF PRESENTATION OF POLLENACT PROJECT Tadej Pirc, Development Centre Murska Sobota, Slovenia
11:40	SUITABILITY OF GRASSLAND HABITATS FOR WILD POLLINATORS AND HONEYBEE IN THE SOUTHEAST PREKMURJE Branko Bakan, Logarica Institute, Slovenia
12:20	FROM RESEARCH AND MONITORING TO ACTION: POLLINATOR CONSERVATION IN MEĐIMURJE AND GORIČKO Mihaela Mesarić, Medimurje Nature, Croatia
13:00	MAINTENANCE AND USE OF GRASSLAND HABITATS ON LAND MANAGED BY GORIČKO NATURE PARK PUBLIC INSTITUTE Kristjan Malačič, Goričko Nature Park, Slovenia
13:40	FILLING OUT THE GAP: THE ROLE OF BUTTERFLIES IN MAINTAINING GRASSLANDS HEALTH Tamas Bedenek, Órség National Park, Hungary
14:20	EXPLORING AND MONITORING BUMBLEBEES WITH THE “FIRST BUMBLEBEE” CITIZEN SCIENCE INITIATIVE Mojca Pibernik, Čmrljica Institute, Slovenia
15:00	CONCLUSIONS AND WRAP-UP Tadej Pirc, Development Centre Murska Sobota, Slovenia